

Knürr CiCon®

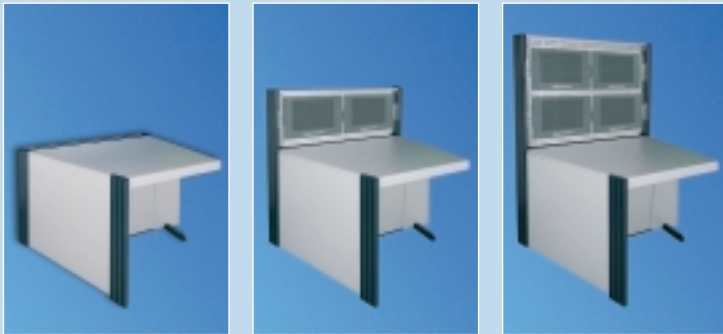
*Modular consoles for every room concept –
plan-friendly, economical und ergonomic*



Knürr CiCon®

The Circular Console

With momentum into a new, modern, current requirements-oriented spatial concept: On the basis of just **three basic modules**, Knürr the CiCon® offers a perfected room layout.



- The **Knürr CiCon®** is
- ... planning-friendly because of its transparent number of structural elements
 - ... flexible with future rearrangements through its modular design
 - ... economical and costs-transparent through clearly defined modules
 - ... ergonomically perfected through its optimum "see and reach" area

Arranged as standard individual module or as part of an "environment", the Knürr CiCon® creates the optimum preconditions for a perfect process flow, in a control/monitoring centre, for example.

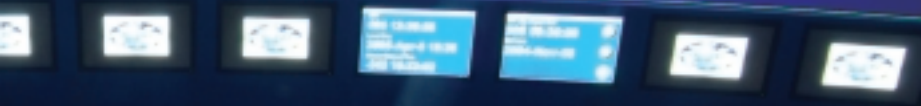
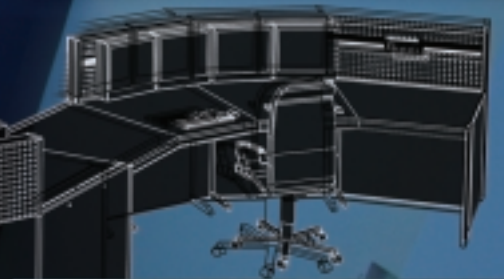


Perfect Planning

Three basic modules

CONTROL CENTER

DLR

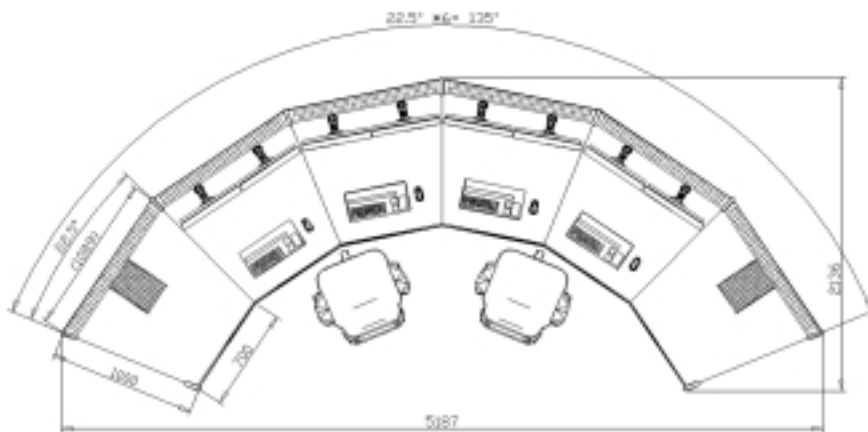
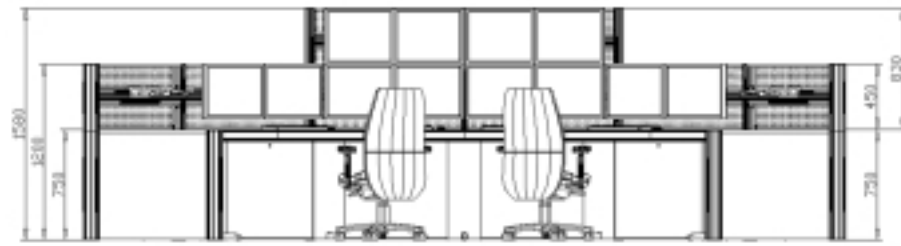


Planning reliability through modular construction

Easy and rapid integration of the most varied operations-related components. The Knürr CiCon® modular design makes it highly flexible, and its extrusion technology makes it extremely robust. Easy-on-the-eye and durable surfaces provide the perfect finish to the concept.



Knürr CiCon® Strong points



CIC20059



2 CIC20057

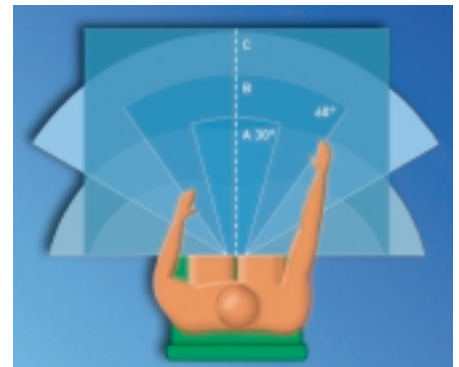


3 CIC20060

1 Ergonomics

The circular arrangement of the modules provides an optimum “see and reach” area. A workstation that is ergonomically set up with Knürr CiCon® counteracts tension in the head and neck muscles.

A comfortable, ergonomic sitting position requires sufficient leg space. Knürr CiCon® modules guarantee leg space with full stability.



1 ELI20022

2 Continuous worktop surfaces

In the link-up area the connector elements are hidden in the worktop, consequently providing a continuous worktop area.

3 Monitor integration

Quick and easy installation of TFT monitors; all trade-standard sizes in one or two levels.

Flexible mounting of flat screen monitors using multifunctional rails.



3 CIC20031

Knürr CiCon® Starke Argumente

4 Flexible equipment access

Knürr CiCon® enables easy installation through removable front and rear covers. It can also be “locked up” on request. The technical pedestal (D: 320 mm) offers the option of integrating computers, 19” elements and mounting panels for non-standard components.

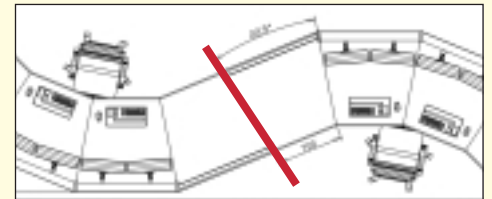
5 Cable routing

Separate horizontal and vertical cable routing with cable basket trays and cable routing rings simplifies the cabling in the Knürr CiCon® modules. Easy and dust-protected cable entry with brush strips over the entire desk width.

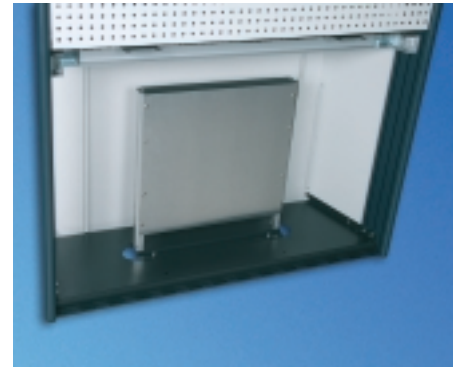
Note:

A special connecting element is required with S-shape configurations and configurations running in opposing directions.

Get in touch with us – We provide expert support with every kind of planning.



4 CIC20052



4 CIC20053



5 CIC20054



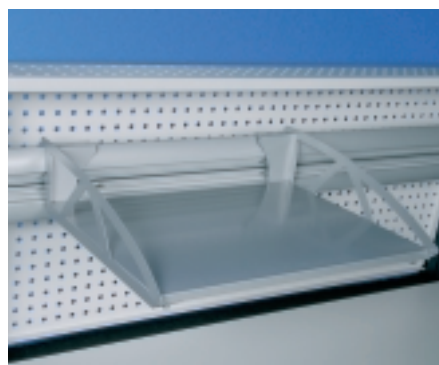
5 CIC20055



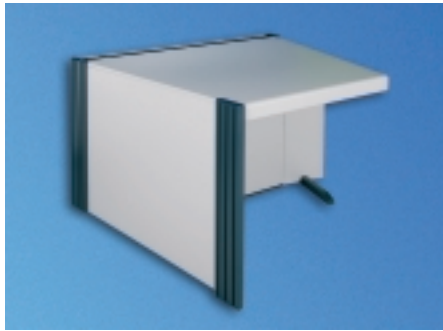
6 CIC20031

6 Individual workstation

In addition to flat screen adapters, workstation lamps and assorted accessories can also be positioned on the multifunctional rails.



6 CIC20056



CIC20043



CIC20044



CIC20045

Knürr CiCon® Module 1 22.5°

- Work level with full-cover worktop
- Knürr CiCon frame with integrated front and rear panel mounting
- Technical pedestal accessible from front and rear
- Cable routing possible from above in the cable duct across the entire desk width
- Dust protection in the cable routing area with brush strip
- The technical pedestal is open on the side with link-up for horizontal cabling
- Full front and rear cover can be removed from the technical pedestal
- Technical bottom cover with cable entry, diameter 80 mm
- Technical bottom cover prepared for 19" frame mounting
- With side panels
- Prepared for fitting a socket strip

Load rating
1500 N (static surface load)

- Standards**
- DIN 68761 for worktop
 - EN 438 HGS class for coating material

Material / Finish

- Desk legs, extruded aluminium, powder-coated texture
- Worktop: three layer particle board, FP/Y E1 version, fire protection class B2
- Worktop coating: high pressure plastic laminate
- Side panels, front and rear covers: three layer particle board, FP/Y E1 version, directly coated, fire protection class B2
- CiCon desk frame: sheet steel, zinc passivated
- Technical bottom cover, powder-coated texture

Colour

- Legs: RAL 5008 grey blue
- Worktop, side panel, front and rear covers: light-grey
- Technical bottom cover, RAL 9011 graphite black

Supply schedule

- 1 CiCon work level with brush strip
- 1 CiCon desk frame
- front cover
- 1 rear cover
- 1 trim panel
- Knürr CiCon side panels
- 1 mounting instructions
- Legs
- Mounting material

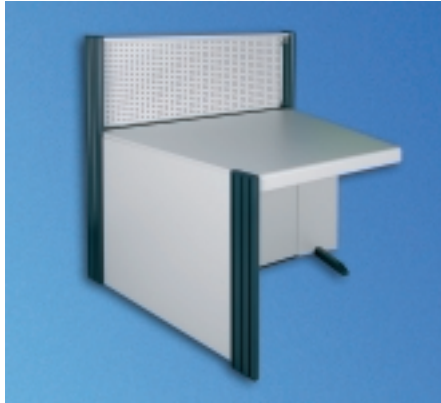
How supplied

Flat packed in modules

Note

- Please order socket strips separately
- The "push-lock" of the front and rear covers can be optionally exchanged with a lock

W	H	D	Model	Order no.	UP
700	750	1000	Module 1, left	01.315.900.1	1 unit
700	750	1000	Module 1, centre	01.315.901.1	1 unit
700	750	1000	Module 1, right	01.315.902.1	1 unit



CIC20046



CIC20047



CIC20048

Knürr CiCon® Module 2 22.5° Designed for 1 flat screen level

- Working level with full-cover worktop
- With perforated rear panel for 1 flat screen level
- Knürr CiCon frame with integrated front and rear panel mounting
- Technical pedestal accessible from front and rear
- Cable routing possible from above in the cable duct across the entire desk width
- Dust protection in the cable routing area with brush strip
- The technical pedestal is open on the side with link-up for horizontal cabling
- Full front and rear cover can be removed from the technical pedestal
- Technical bottom cover with cable entry, diameter 80 mm
- Technical bottom cover prepared for 19" frame mounting
- With side panels
- Prepared for fitting a socket strip

- **Load rating**
1500 N (static surface load)

- **Standards**
 - DIN 68761 for worktop
 - EN 438 HGS class for coating material

Material / Finish

- Desk legs, extruded aluminium, powder-coated texture
- Worktop: three layer particle board, FP/Y E1 version, fire protection class B2
- Perforated rear panel, sheet steel, powder-coated texture
- Worktop coating: high pressure plastic laminate
- Knürr CiCon desk frame: sheet steel, zinc passivated
- Side panels, front and rear covers: three layer particle board FP/Y
- E1 version, directly coated, fire protection class B2
- Technical bottom cover, powder-coated texture

Colour

- Legs: RAL 5008 grey blue
- Worktop, side panel, front and rear covers: light-grey
- Technical bottom cover, RAL 9011 graphite black
- Perforated rear panel: RAL 7035 light-grey

Supply schedule

- 1 Knürr CiCon work level with brush strip
- 1 Knürr CiCon desk frame
- front cover
- 1 rear cover
- 1 trim panel
- Knürr CiCon side panels
- 1 perforated rear panel for 1 flat screen level
- 1 mounting instructions
- Legs
- Mounting material

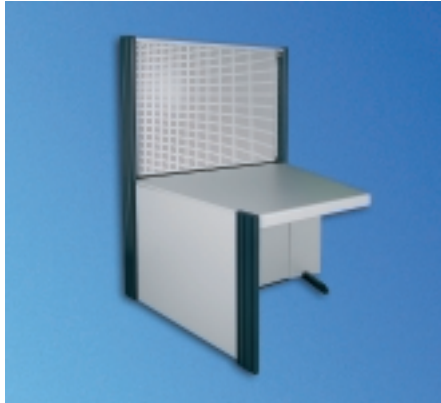
How supplied

- Flat packed in modules

Note

- Please order socket strips separately
- The "push-lock" of the front and rear covers can be optionally exchanged with a lock

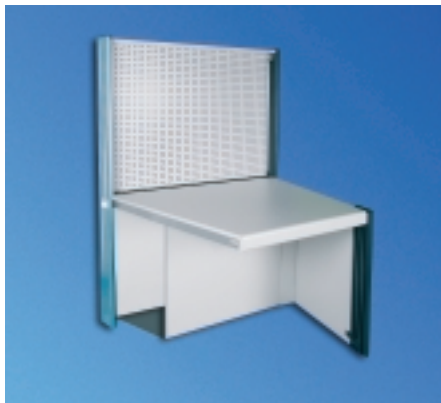
W	H	D	Model	Order no.	UP
700	750	1000	Module 2, left	01.315.903.1	1 unit
700	750	1000	Module 2, centre	01.315.904.1	1 unit
700	750	1000	Module 2, right	01.315.905.1	1 unit



CIC20049



CIC20050



CIC20051

Knürr CiCon® Module 3 22.5° Designed for 2 flat screen levels

- Work level with full-cover worktop
- With perforated rear panel for 2 flat screen levels
- Knürr CiCon frame with integrated front and rear panel mounting
- Technical pedestal accessible from front and rear
- Cable routing possible from above in the cable duct across the entire desk width
- Dust protection in the cable routing area with brush strip
- The technical pedestal is open on the side with link-up for horizontal cabling
- Full front and rear cover can be removed from the technical pedestal
- Technical bottom cover with cable entry, diameter 80 mm
- Technical bottom cover prepared for 19" frame mounting
- With side panels
- Prepared for fitting a socket strip

Load rating
1500 N (static surface load)

Standards
- DIN 68761 for worktop
- EN 438 HGS class for coating material

Material / Finish

- Desk legs, extruded aluminium, powder-coated texture
- Worktop: three layer particle board, FP/Y E1 version, fire protection class B2
- Perforated rear panel, sheet steel, powder-coated texture
- Worktop coating: high pressure plastic laminate
- Knürr CiCon desk frame: sheet steel, zinc passivated
- Side panels, front and rear covers: three layer particle board, FP/Y E1 version, directly coated, fire protection class B2
- Technical bottom cover, powder-coated texture

Colour

- Legs: RAL 5008 grey blue
- Worktop, side panel, front and rear covers: light-grey
- Technical bottom cover, RAL 9011 graphite black
- Perforated rear panel: RAL 7035 light-grey

Supply schedule

- 1 Knürr CiCon work level with brush strip
- 1 Knürr CiCon desk frame
- front cover
- 1 rear cover
- 1 trim panel
- Knürr CiCon side panels
- 1 perforated rear panel for 2 flat screen levels
- 1 mounting instructions
- Legs
- Mounting material

How supplied

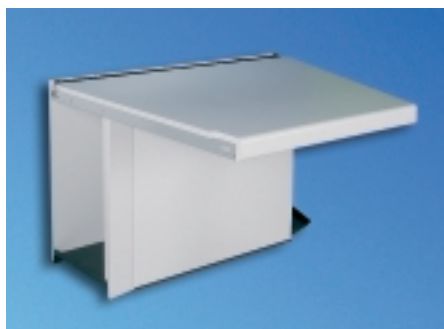
Flat packed in modules

Note

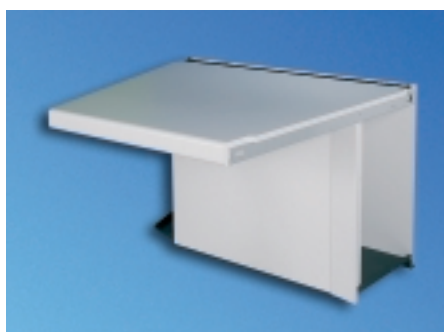
- Please order socket strips separately
- The "push-lock" of the front and rear covers can be optionally exchanged with a lock

W	H	D	Model	Order no.	UP
700	750	1000	Module 3, left	01.315.906.1	1 unit
700	750	1000	Module 3, centre	01.315.907.1	1 unit
700	750	1000	Module 3, right	01.315.908.1	1 unit

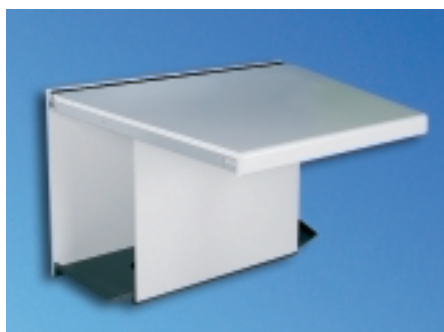
Extension Elements



CIC20011



CIC20012



CIC20013

Knürr CiCon® Work Level 22.5° One-piece front and rear covers

- Work level with full-cover worktop
- Knürr CiCon frame with integrated front and rear panel mounting
- Technical pedestal accessible from front and rear
- Cable routing possible from above in the cable duct across the entire desk width
- Dust protection in the cable routing area with brush strip
- The technical pedestal is open on the side with link-up for horizontal cabling
- Full front and rear cover can be removed from the technical pedestal
- Technical bottom cover with cable entry, diameter 80 mm
- Technical bottom cover prepared for 19" frame mounting
- Prepared for fitting a socket strip

Load rating
1500 N (static surface load)

- Standards**
- DIN 68761 for worktop
 - EN 438 class HGS for coating material
 - DIN 16926 for high pressure laminate

Material / Finish

- Worktop: three layer particle board, FP/Y E1 version, fire protection class B2
- Worktop coating: high pressure plastic laminate
- Knürr CiCon desk frame: sheet steel, zinc passivated
- Front and rear covers: three layer particle board, FP/Y E1 version, directly coated, fire protection class B2
- Technical bottom cover, powder-coated texture

Colour

- Worktop, front and rear covers: light-grey
- Technical bottom cover, RAL 9011 graphite black

Supply schedule

- 1 worktop with brush strip
- 1 Knürr CiCon desk frame
- 1 front cover
- 1 rear cover
- 1 trim panel
- 1 mounting instructions
- Mounting material

How supplied

Flat packed in modules

Note

- Please order socket strips separately
- The "push-lock" of the front and rear covers can be optionally exchanged with a lock

W	H	D	kg	Model	Order no.	UP
700	750	1000		Work level, left	01.315.052.1	1 unit
700	750	1000		Work level, right	01.315.053.1	1 unit
700	750	1000		Without extrusion cutout	01.315.051.1	1 unit



CIC20037

Knürr CiCon® Work Level 22.5° One-piece front and rear covers

- Work level with full-cover worktop
- Knürr CiCon frame with integrated front and rear panel mounting
- Technical pedestal accessible from front and rear
- Cable routing possible from above in the cable duct across the entire desk width
- Dust protection in the cable routing area with brush strip
- The technical pedestal is open on the side with link-up for horizontal cabling
- Full front and rear cover can be removed from the technical pedestal
- Technical bottom cover with cable entry, diameter 80 mm
- Technical bottom cover prepared for 19" frame mounting
- Prepared for fitting a socket strip

Load rating

1500 N (static surface load)

Standards

- DIN 68761 for worktop
- EN 438 class HGS for coating material
- DIN 16926 for high pressure laminate

Material / Finish

- Worktop: three layer particle board, FP/Y E1 version, fire protection class B2
- Worktop coating: high pressure plastic laminate
- Knürr CiCon desk frame: sheet steel, zinc passivated
- Front and rear covers: three layer particle board, FP/Y E1 version, directly coated, fire protection class B2
- Technical bottom cover, powder-coated texture

Colour

- Worktop, front and rear covers: light-grey
- Technical bottom cover, RAL 9011 graphite black

Supply schedule

- 1 worktop with brush strip
- 1 Knürr CiCon desk frame
- 1 front cover
- 1 rear cover
- 1 mounting instructions
- Mounting material

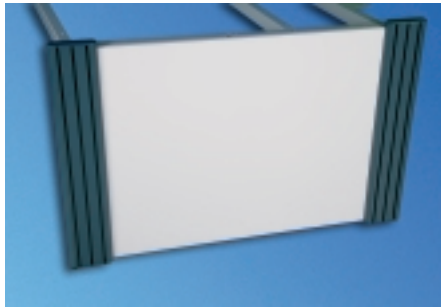
How supplied

Flat packed in modules

Note

- Please order socket strips separately
- The "push-lock" of the front and rear covers can be optionally exchanged with a lock
- Suitable for linking control console desks

W	H	D	kg	Model	Order no.	UP
700	750	1000		2 Without extrusion cut-out	01.315.054.1	1 unit



CIC20016

Knürr CiCon® End Side Panel

- Side panel for closing off for Knürr CiCon

Material / Finish

- Desk leg, extruded aluminium, powder-coated texture
- Side panel, three layer particle board, FP/Y E1 version, directly coated, fire protection class B2
- Retaining plate, sheet steel, powder-coated texture

Colour

- Desk leg and retaining plate: RAL 5008 grey blue
- Side panel: light-grey

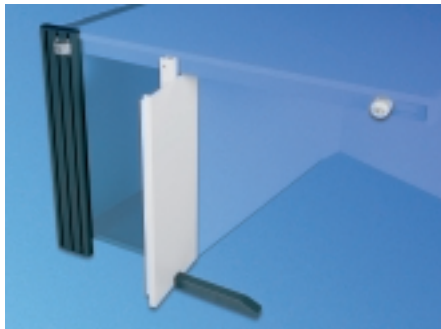
Supply schedule

- 2 desk legs with connection components
- 1 side panel
- 1 side panel retaining plate

How supplied

Pre-assembled

W	H	D	kg	Model	Order no.	UP
	750	1000		.	01.315.000.1	1 unit



CIC20010

Knürr CiCon® Link-Up Side Panel

- Side panel for linking up for Knürr CiCon

Material / Finish

- Desk leg, extruded aluminium, powder-coated texture
- Foot stabilizer, support and double trim panel, powder-coated texture

Colour

- Desk leg and foot stabilizer: RAL 5008 grey blue
- Support and double trim panel, RAL 7035, light-grey

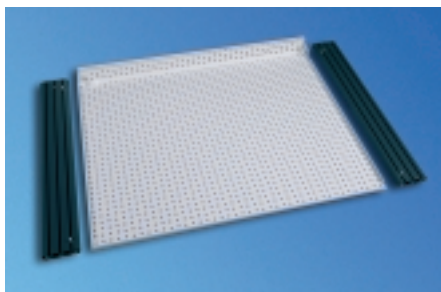
Supply schedule

- 1 desk leg and 1 link-up adapter
- 1 foot stabilizer
- 1 support
- 1 double trim panel
- Assembly material

How supplied

Individual parts pre-assembled

W	H	D	kg	Model	Order no.	UP
	750	1000			01.315.008.1	1 unit



CIC20017

Knürr CiCon® Perforated Rear Panel

- Perforated rear panel suitable for Knürr CiCon 22.5°
- Privacy screen for monitors and monitor cables
- Retaining extrusions are set up and connected on existing control console

Material / Finish

- Perforated rear panel, sheet steel, powder-coated texture
- Retaining extrusion, extruded aluminium, powder-coated texture

Colour

- Perforated rear panel, RAL 7035 light-grey
- Retaining extrusion, RAL 5008 grey blue

Supply schedule

- 1 perforated rear panel
- Retaining extrusions incl. mounting material

How supplied

Preassembled modules

H	D	Retaining extrusions	Model	Order no.	UP
830		2 units	2 retaining extrusions	01.315.724.1	1 unit
830		1 unit	1 retaining extrusion	01.315.725.1	1 unit
450		2 units	2 retaining extrusions	01.315.726.1	1 unit
450		1 unit	1 retaining extrusion	01.315.727.1	1 unit



CIC20018



CIC20014

Knürr CiCon® Functional Rails

- Suitable for Knürr CiCon 22.5° product line

Material / Finish

- Extruded aluminium extrusion, powder-coated, smooth, RAL 9006, white aluminium

Supply schedule

2 functional rails
2 mounting panels
Product-specific mounting material

How supplied

Flat-packed kit

Note

For adapting flat screen holders

L	H	D	HU/U	h	d	kg	Model	Order no.	UP
1046	111							01.315.078.9	1 unit

Flat Screen Holder, Hinged Arm

- Flat screen holder for mounting flat screens with the 75 and 100 mm VESA mounting

Variants

- Short, type D
- Centre, type E
- Long, type F
- Two-joint, type G

Material / Finish

Adapter: sheet steel, powdered, smooth RAL 9006, white aluminium
Flat screen holder, 9006, white aluminium

Supply schedule

1 flat screen holder, complete

Supply schedule

Flat-packed kit

Note

Please note! Two identical functional rails are required for mounting flat screen holders.

Adaption on the vertical extrusion of Dacobas units.
01.316.214.9. For flat screens with a weight of up to 12 kg.

W	H	D	Model	Order no.	UP
			Short, type D	01.316.210.9	1 unit
			Centre, type E	01.316.211.9	1 unit
			Long, type F	01.316.212.9	1 unit
			Two-joint, type G	01.316.213.9	1 unit



CIC20031

Type D



CIC20032

Type E



CIC20033

Type F



CIC20034

Type G



CIC20015

Knürr CiCon® Cabling System

- Cabling system suitable for Knürr CiCon 22.5° technical pedestal
- Separate cable routing for data and network lines
- Horizontal and vertical cable management
- Cable routing rings in open version, no threading

Material / Finish

- Cable basket tray: steel, coated
- Adapter, sheet steel, powder-coated texture, RAL 7035, light-grey
- Cable routing rings, plastic, grey

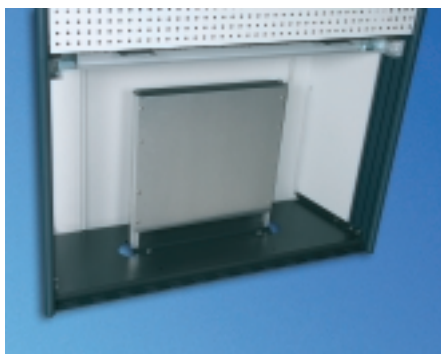
Supply schedule

- 2 basket trays, suitable for Knürr CiCon
- 2 adapters for basket tray mounting
- 5 cable routing rings
- Assembly material

How supplied

- Flat-packed kit

L	d	kg	Model	Order no.	UP
1014				01.315.089.9	1 unit



CIC20053

Knürr CiCon 19" Rack

- 19" rack for mounting 19" components and mounting panels
- Mounting on the CiCon technical pedestal
- Equipment can be set at any level on the 19" extrusion with spring nuts

Material / Finish

- 19" adapter panel and rack cover, sheet steel, powder-coated texture, RAL 9011 graphite black
- 19" extrusions, extruded aluminium, polished

Supply schedule

- 1 adapter panel
- 1 rack cover
- 2 19" extrusions
- 4 threaded inserts

How supplied

- Flat packed kit

W	H	D	HU	Model	Order no.	UP
493			12		01.315.060.9	1 unit



CIC20038

Cirrus - Lamp®

Technical data

- Compact fluorescent tube, 18 watt
- Coated parabolic grid in luminaire head prevents direct or reflected glare
- Supply voltage: 100/120/230 V; 50/60 Hz
- Electronic series reactor in the luminaire head
- Joints, spring relieved
- Luminaire head made of impact-resistant plastic

Colour

- Final digit of order number .9:
- Rods/bars: RAL 9005 black
- Lamp body: RAL 9005 black

Supply schedule

- 1 workstation lamp
- 1 universal mounting adapter

Note

- Adapter set for mounting lamp 00.351.031.7
- Lamp adapter for mounting on functional rail 01.316.225.9
- Lamp adapter for mounting on the vertical extrusion 01.300.961.1

W	H	D	Model	Order no.	UP
				00.350.153.x	1 unit



CIC20020



CIC20021



CIC20041

Control Station Chair, Mr. 24

- Seat and back support upholstery generously dimensioned for high sitting comfort
- Integrated lumbar support height and depth adjustment via ergonomically well situated operating elements on the rear side of the backrest
- Basically with slide seat with sitting depth setting
- Headrest in leather, chromium-plated support
- Seat and backrest move in complete synchrony with the body
- Adaption to different user weights enables individual spring force setting
- Backrest inclination, practically continuous locking
- Constant back support, including with far reclined working position
- Vision height setting protected against dirt by sleeve packet
- Extremely robust armrests for 24-hour use
- Soft castors for hard floors
- GS tested
- British Standard

Technical data

- Sitting depth setting from 400 to 460 mm
- Backrest width and height, 470 x 600 mm

- Seat width and depth, 470 x 400 mm
- Headrest adjustment, 50 mm
- Headrest width and height, 360 x 150 mm
- Similar mechanism dimensioned for a body weight of up to 200 kg
- Backrest inclination up to 32°
- Sitting height setting from 420 to 515 mm
- Armrest height setting from 190 to 300 mm
- Armrest width setting, 2 x 50 mm
- Armrest depth setting, 80 mm

Material

Cover: Tec wear and tear-proof cover material

Colour

Fabric: black
Castors, five-feet : polished

Supply schedule

1 Control Station Chair

How supplied

Assembled

Note

Hard castors can be ordered for soft floors.

W	H	D	Model	Order no.	UP
				00.350.073.9	1 unit



CIC20030

Recaro Guard L Control Station Chair – 24-Hour Chair

- Tilt and height adjustable headrest for relaxed working
- Twin air chamber/pelvic support
- High durability materials, both with the frame structure and with the covering materials (meets highly demanding requirements, as based on car seat designs)
- Armrests can be folded up and tilt adjusted
- Tested for the most extreme load rating
- Backrest inclination can be adjusted with hand wheel operated on both sides
- Extremely comfortable sitting provided by tightly structured upholstery
- High load rating mechanism with cantilever function
- Individual weight adjustment option, (approx. 60 - 130 kg)
- Extra-strong gas spring for height adjustment
- Well-dimensioned base for standing stability (external diameter, 720 mm)
- Adjustable thigh support
- Soft castors for hard floors
- GS tested
- British Standard

Technical data

- Backrest width and height, 432 x 658 mm

- Seat width and depth, 427 x 430 mm
- Width and length of the armrests, 74 x 324 mm
- Headrest height adjustment range, 0 - 80 mm
- Headrest angle adjustment, 0 - 35°

Material

Cover: leather cover fabric

Colour

Leather and fabric: black
Castors, five-feet : polished

Supply schedule

1 Recaro Guard Control Station Chair
1 protective cover for headrest

How supplied

Assembled

Note

Hard castors can be ordered for soft floors.

W	H	D	Model	Order no.	UP
				00.350.072.1	1 unit

Dimensions in mm: W = width, H = height, D = depth, 1 mm \pm 0.03937 inch, CRS = Cable routing set, ESD = ESD version
HU / U = Standard height units (Unit), UP = Unit of packaging, kg = weight, OU = Office unit = 50 mm
1 FH = Folder height = min. 325 mm

Protective Cover for Headrest, 24-Hour Control Station Chair

- Protective cover for 24-hour control station chair headrest
- Protective cover fitted with Velcro fastener on the headrest

Material
Bubble crepe (washable)

Colour
Grey

Note
With multi-shift operation, exchangeable covers are stipulated in the provisions of some authorities!

	Model	Order no.	UP
	for Recaro Guard L 24	00.350.071.1	1 unit
	for mr. 24	00.350.075.1	1 unit

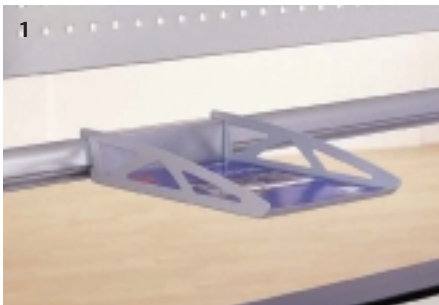
Organiser Shelves Compatible with functional rails

Material / Finish
Sheet steel, powdered texture,
RAL 9006 white aluminium

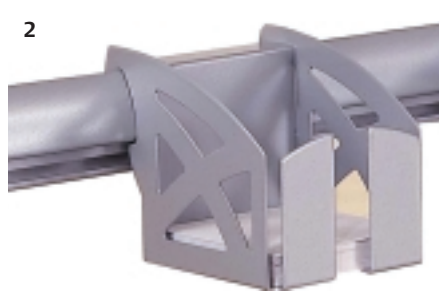
How supplied
Flat-packed kit

Supply schedule
1 organiser accessory

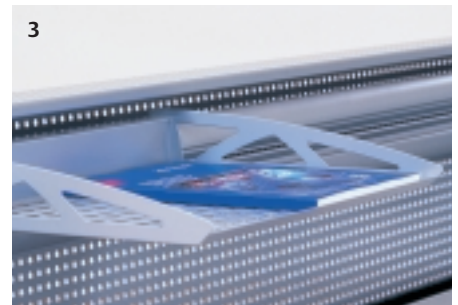
W	H	D	Model	Order no.	UP
			1 Tray shelf, DIN A4	04.300.400.9	1 unit
			2 Notepad box with block	04.303.103.9	1 unit
			3 Tray shelf, DIN A3	04.300.401.9	1 unit
			4 Console, 430 mm	04.303.106.9	1 unit
			5 CD holder	04.300.402.9	1 unit
			6 Standing holder, DIN A4	04.303.110.9	1 unit
			Console 8430 mm	04.303.107.9	1 unit



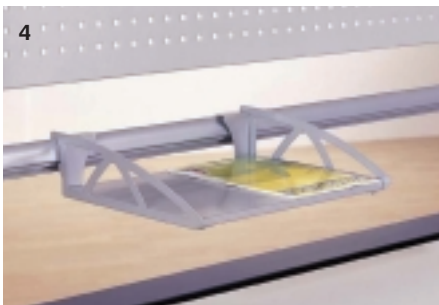
DAC20082



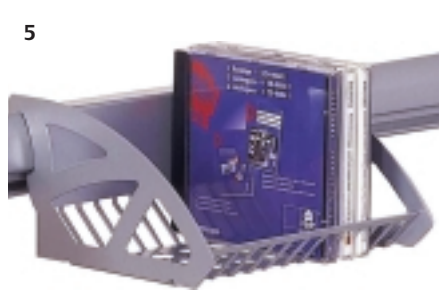
DAC20089



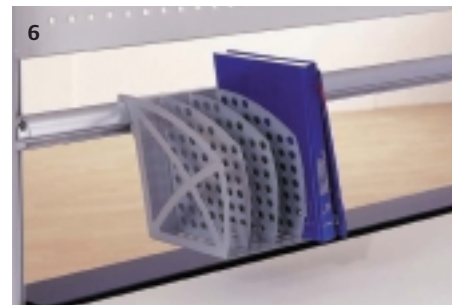
DAC00600



DAC20091



DAC20083



DAC20090



CIC20028



CIC20029

Mobile Drawer Unit

- Bonded main unit
- All telescopic slides enclosed
- Drawer catch
- Central locking system with exchangeable cylinder
- 1 key as stability key

Material / Finish

- Main unit and top cover: three layer particle board, FP/Y E1 version, directly coated, fire protection class B2
- Drawer trim and drawer handle: plastic (PS)
- Drawer tray: sheet steel in black
- Castor diameter, 37 mm

Load rating

- 400 N per twin swivel castor

Standards

- Main unit and top cover, DIN 68765
- EN 438 for high pressure plastic laminate

Colour

- Final digit of order number .1:
- Main unit and front trim panel, handle in light-grey

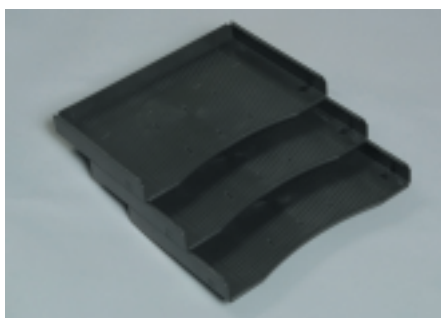
Supply schedule

- 1 mobile drawer unit, 10 OU

How supplied

- Assembled

W	H	D	CRS	OU	ESD	Order no.	UP
435	561	600		1-3-3-3		00.320.500.x	1 unit
435	561	600		1-3-6		00.320.501.x	1 unit
435	561	800		1-3-3-3		00.320.502.x	1 unit
435	561	800		1-3-6		00.320.503.x	1 unit



MOB00219

Inclined Shelves

- For clear and transparent storage of forms and papers in drawers
- With 600 depth, up to 5 sections
- With 800 depth, up to 7 sections

Material

- Plastic

Colour

- Black, not ESD

Supply schedule

- 1 tray section

Model	Order no.	UP
	00.320.539.9	1 unit



ELI00270

Subdivider for Drawers



DAC00006

Material

- Plastic

Finish

- Black

Note:

- Subdivisions DIN A 5/DIN A 6 only in conjunction with DIN A 4 divider

Supply schedule

- 1 unit

Model	Order no.	UP
DIN A 4	00.320.538.9	1 unit
DIN A 5	00.320.537.9	1 unit
DIN A 6	00.320.536.9	1 unit



CIC20022

Wall-Standing Cabinet With Double Doors

- Bonded wooden main unit
- Can be adjusted with 4 levelling screws, with plinth
- All cabinets can be locked with olive-shaped handle and cylinder lock
- Without plinth and levelling screws with stackable cabinets

Colour

- Final digit of order number 0.2:
- Main unit and doors: light-grey
 - Shelf: RAL 7035 light-grey
- Final digit of order number .5:
- Main unit and shelves: RAL 7021 dark-grey
 - Doors: beech finish

W	H	D	FH	Model	Order no.	UP
800	772	430	2	With plinth	00.320.001.x	1 unit
800	1352	430	3	With plinth	00.320.002.x	1 unit
800	1292	430	3	Stackable cabinet	00.320.026.x	1 unit
800	1484	430	4	With plinth	00.320.003.x	1 unit
800	2064	430	5	With plinth	00.320.004.x	1 unit
1200	772	430	2	With plinth	00.320.005.x	1 unit
1200	1352	430	3	With plinth	00.320.006.x	1 unit
1200	1292	430	3	Stackable cabinet	00.320.028.x	1 unit
1200	1484	430	4	With plinth	00.320.007.x	1 unit
1200	2064	430	5	With plinth	00.320.008.x	1 unit



CIC20023

Wall-Standing Cabinet With Sliding Doors

- Bonded wooden main unit
- Height adjustable with 4 levelling screws
- All cabinets can be locked with cylinder lock
- With a centre panel

Colour

- Final digit of order number 0.2:
- Main unit and sliding doors: light-grey
 - Shelves: RAL 7035 light-grey
- Final digit of order number .5:
- Main unit and shelves: RAL 7021 dark-grey
 - Sliding door: beech finish

W	H	D	FH	Model	Order no.	UP
1200	772	430	2	With plinth	00.320.051.x	1 unit
1200	712	430	2	Stackable cabinet	00.320.061.x	1 unit
1200	1352	430	3	With plinth	00.320.052.x	1 unit
1200	1292	430	3	Stackable cabinet	00.320.062.x	1 unit



CIC20024

Pedestal Cabinet in Worktop Height

- With integrated, ergonomic postformed top
- Bonded wooden main unit
- All 4 levelling screws adjustable
- All cabinets can be locked with cylinder lock
- With a centre panel
- Optionally with/without plinth

Colour

- Final digit of order number .2:
- Main unit, sliding doors and postformed top: light-grey
 - Shelves: RAL 7035 light-grey
- Final digit of order number 0.5:
- Main unit and shelves: RAL 7021 dark-grey
 - Postformed top and sliding doors: beech finish

Variants

- Type 1
- With plinth
- Type 2
- Without plinth

W	H	D	FH	Model	Order no.	UP
1200	780	430	2	With plinth	00.320.071.x	1 unit
1200	720	430	2	Without plinth	00.320.057.x	1 unit



CIC20039

Lockable Compartments Cabinet

- Bonded wooden main unit
- Can be adjusted with 4 levelling screws, with plinth
- All compartments can be individually locked with cylinder lock

Material / Finish

Main unit, doors, side panels, bottom covers and rear panels: three-layer particle board, FP/Y E1 version, directly coated, fire protection class B2

Colour

Main unit, doors, side panels, bottom covers and rear panels: light-grey

Standards

DIN 68761 for main unit
EN 438 for coating material

Supply schedule

1 lockable compartments cabinet, individually locking

W	H	D	FH	Model	Order no.	UP
1200	2064	430			00.320.009.2	1 unit



CIC20025

Wall-Standing Shelf Unit

- Bonded wooden main unit
- Can be adjusted with 4 levelling screws, with plinth
- With plinth and adjustable feet
- Without plinth and levelling screws as stackable cabinet

Colour

Final digit of order number 0.1:

- Main unit: light-grey
- Shelf: RAL 7035 light-grey

W	H	D	FH	Model	Order no.	UP
800	712	430	2	Stackable cabinet	00.320.225.1	1 unit
800	1352	430	3	With plinth	00.320.202.1	1 unit
800	1292	430	3	Stackable cabinet	00.320.226.1	1 unit
800	1484	430	4	With plinth	00.320.203.1	1 unit
800	2064	430	5	With plinth	00.320.204.1	1 unit
1200	772	430	2	With plinth	00.320.205.1	1 unit
1200	712	430	2	Stackable cabinet	00.320.227.1	1 unit
1200	1352	430	3	With plinth	00.320.206.1	1 unit
1200	1292	430	3	Stackable cabinet	00.320.228.1	1 unit
1200	1484	430	4	With plinth	00.320.207.1	1 unit
1200	2064	430	5	With plinth	00.320.208.1	1 unit



CIC20026

Shelf Unit

At worktop height with postformed top

- With integrated, ergonomic postformed top
- Bonded wooden main unit
- Can be adjusted with 4 levelling screws, with plinth
- Without plinth and without levelling screws

Final digit of order number .1:

- Main unit and postformed top: light-grey
- Shelf: RAL 7035 light-grey

Variants

Type 1

- With plinth

Type 2

- Without plinth

Colour

W	H	D	FH	Model	Order no.	UP
800	780	430	2	With plinth	00.320.231.1	1 unit
800	720	430	2	Without plinth	00.320.241.1	1 unit
1200	780	430		With plinth	00.320.235.1	1 unit
1200	720	430		Without plinth	00.320.245.1	1 unit



CIC20035

Standing Desk, Octagonal

- Standing console: perfect for discussions with several people on-site
- Octagonal with storage options for folders and equipment
- Bonded main unit

Material / Finish
Worktop, main unit and shelves - three-layer particle board, FP/Y. E1 version, directly coated, fire protection class B2

Standards
EN 438 class for coating material

Colour
Worktop, main unit and shelves: light-grey

Supply schedule
1 standing console

How supplied
Assembled

W	H	D	Model	Order no.	UP
1295	1150	1295		01.315.722.1	1 unit



CIC20036

Printer Stand, Open Model

- Open model
- Worktop with removeable parts for exact setting of printer types
- Integrated paper guide
- With insert panels for printer adjustment
- With fixed paper storage shelf
- With removeable front panel below for access to the cable space
- Removable rear panel
- Cable entry, top and side

Standards
DIN 68761 for worktop
EN 438 class for coating material

Material / Finish
Main unit, insert panels, rear panel and worktop: three layer particle board, FP/Y E1 version, directly coated, fire protection class B2

Colour
Main unit, insert panels, rear panel and worktop, RAL 7035 light-grey

Supply schedule
1 printer stand

How supplied
Assembled

W	H	D	Model	Order no.	UP
570	750	785		01.311.324.1	1 unit

Emerson Network Power is the global technology leader in numerous areas, and a recognized expert in helping to secure business-critical processes, and therefore contributes to “business-critical continuity.” A whole range of the most varied applications, including the tried and tested Knürr rack system solutions and the accompanying thermal management, ensures the required network stability with maximum technological adaptability at the same time.

Knürr system solutions in the world of information and network technology are part of an adaptive architecture from Emerson Network Power, which flexibly adapts to changes concerning security, high-density and all associated capacities. Companies are provided sustainable and long-term benefits from the high IT availability, operative flexibility and impressive reduction in investment and operating costs.

The Knürr Technical Furniture business unit develops, produces and distributes technical workstation systems for control consoles, operation control centers and electronics labs, as well as mobile equipment carriers for the automotive and medical technology industries.

Knürr AG is recognized around the world as one of the leading developers, manufacturers and distributors of rack and enclosure platforms in the indoor and outdoor area, including all relevant active/passive components in 19” construction and the technologies associated with it. Knürr is part of Emerson Network Power.

Knürr is certified in accordance with EN ISO 9001 and EN ISO 14001, and its quality management continuously guarantees the highest standards in all areas of the company.

Emerson Network Power

The global leader in enabling business-critical continuity

- | | | | |
|--------------------|--------------------------------|------------------------------|-----------------------------|
| ■ AC Power Systems | ■ Embedded Power | ■ Power Switching & Controls | ■ Site Monitoring |
| ■ Connectivity | ■ Integrated Cabinet Solutions | ■ Precision Cooling | ■ Surge & Signal Protection |
| ■ DC Power Systems | ■ Outside Plant | ■ Services | ■ Rack & Enclosure Systems |

Knürr logo, Emerson Network Power and the Emerson Network Power logo are trademarks and service marks of Emerson Electric Co. ©2008 Emerson Electric Co.

Knürr AG Global Headquarters

Mariakirchener Straße 38
94424 Arnstorf • Germany
Tel. +49 (0) 87 23 / 27 - 0
Fax +49 (0) 87 23 / 27 - 154
info@knuerr.com
www.knuerr.com

Knürr Technical Furniture GmbH Business Unit

Hauptstraße 35
94439 Münchsdorf • Germany
Tel. +49 (0) 87 23 / 28 - 0
Fax +49 (0) 87 23 / 28 - 138
www.technical-furniture.com

While every precaution has been taken to ensure accuracy and completeness in this literature, Knürr AG assumes no responsibility, and disclaims all liability for damage resulting from use of this information or for any errors or omissions.

©2008 Knürr AG. All rights reserved throughout the world. Specifications subject to change without notice.

All names referred to are trademarks or registered trademarks of their respective owners.

©Knürr and the Knürr logo are registered trademarks of Knürr AG.

EmersonNetworkPower.com